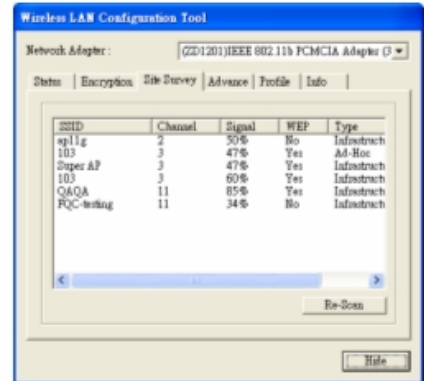


# ACF3000 Compact Flash WiFiCard™



## Wireless Compact Flash Card

### FEATURES & BENEFITS

- Interoperable with IEEE 802.11b compliant devices
- Supports RADIUS (Remote Authentication Dial-In User Service) security function
- Enhances security through WPA (Wi-Fi Protected Access) supports of TKIP (Temporary Key Integrity Protocol) or AES (Advanced Encryption Standard) algorithm
- WEP (Wired Equivalent Privacy) 64/128-bit encryption
- Supports IEEE802.1x VPN pass through
- Supports both "Ad-Hoc" and "Infrastructure" topologies
- Supports full mobility and seamless 802.11d roaming
- Multi-Language support
- Enhances reliable connectivity through automatic data rate fallback in noisy environment
- Plug-and-play installation

### OVERVIEW

The ACF3000 family of Compact Flash WiFiCard™ offers high-speed wireless connection up to 11 Mbps. It enables web browsing, check POP3 email account or synchronizes data wirelessly.

The ACF3000 WiFiCard™ family incorporates the WEP (Wired Equivalent Privacy) with 64-bit/128-bit encryption design that supports a secure and reliable wireless communication. It also enhances security through the WPA (Wi-Fi Protected Access) that supports TKIP (Temporary Key Integrity Protocol) or AEX (Advanced Encryption Standard) algorithm to meet the higher security protection requirement.

All of the ACF3000 WiFiCard™ family of products has performance and reliability exceed the requirements of IEEE 802.11b standard, and its interoperability provides the flexibility to work with other IEEE802.11b compliant device boundlessly.

Its plug-and-play feature provides a care free adaptability which is most suited for embedded application for your PDA, notebook, wireless router, wireless cable modem, wireless web cam, etc.



# ACF3000 Compact Flash WiFiCard™

## SPECIFICATIONS\*

### General:

- Compliant with IEEE 802.11b Standard
- Security: WEP 64-bit, 128-bit, TKIP, 802.1x, AES

### Radio Characteristics:

- RF Range: 2.4 ~ 2.4835 GHz
- Data Rate: 11 / 5.5 / 2 / 1 Mbps
- Modulation: DBPSK for 1 Mbps  
DQPSK for 2 Mbps  
CCK for 5.5 / 11 Mbps
- Number of Channels:  
Europe - 13, US - 11, France - 4, Japan - 14
- Transmit Power (Typ.): +15 dBm
- Receive Sensitivity (Typ. @BER < 10E-5):  
-83 dBm for 11 Mbps

### Power:

- Input Voltage: 5 / 3.3 Vdc
- Current Drain (Typ. @ 3.3 V): Tx mode: 300 mA  
Rx mode: 210 mA

### Software:

- Driver Support: Windows 98 / Me / 2000 / XP / CE;  
Linux
- Utility: User setup & diagnostic tool

**LED:** Green for activity (ACF3000-100 only)

### Mechanical:

- Host Interface: CF type I
- Antenna: One built-in chip antenna
- Dimensions: 55.0 x 43.0 x 6.0 mm (2.16 x 1.69 x 0.23 in)
- Weight: 18 g (0.63 oz)

### Antenna Options:

- ACF3000-100: Build-in chip antenna
- ACF3000-200: External antenna with 175 mm (6.9 in) RF cable

### Environmental:

- Temperature:  
Operating: 0 to +55°C / 32 to 131°F  
Storage: -20 to +65°C / -4 to +149°F
- Relative Humidity: 95% (non-condensing)

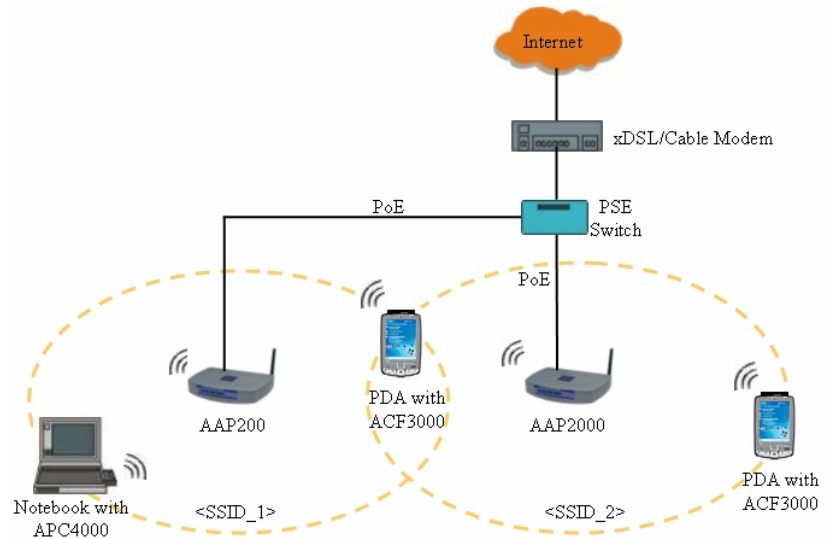
### Certification:

- U.S., Canada:  
FCC Part 15, sections 15.247, 15.205, 15.209; RSS-210
- Europe: ETS 300 328, ETS 300 826, CE Marked

## ORDERING INFORMATION

- ACF3000-100 WiFiCard™ with build-in antenna
- ACF3000-200 WiFiCard™ with external antenna/cable

\*Specifications subject to change.



ACF3000 Infrastructure Mode Application



ACF3000 Peer to Peer or Ad-Hoc Mode Application